

FOR LEASE

Goldenwest Business Park

7300-7404 Bolsa Ave & 15132-15192 Goldenwest Circle
Westminster, CA



±231,250 SF



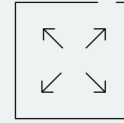
CONTACT US

Brad Bierbaum (714) 371-9210 / brad.bierbaum@cbre.com / Lic. 00996170
Ryan Peterson (714) 371-9212 / ryan.peterson@cbre.com / Lic. 01336025





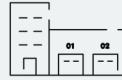
±231,250 SF
Total Building



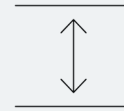
±12.63 Acres
Land Size



Power
100-400 Amps
120/240 Volts



GL Doors
1-2 GL Doors
per Unit

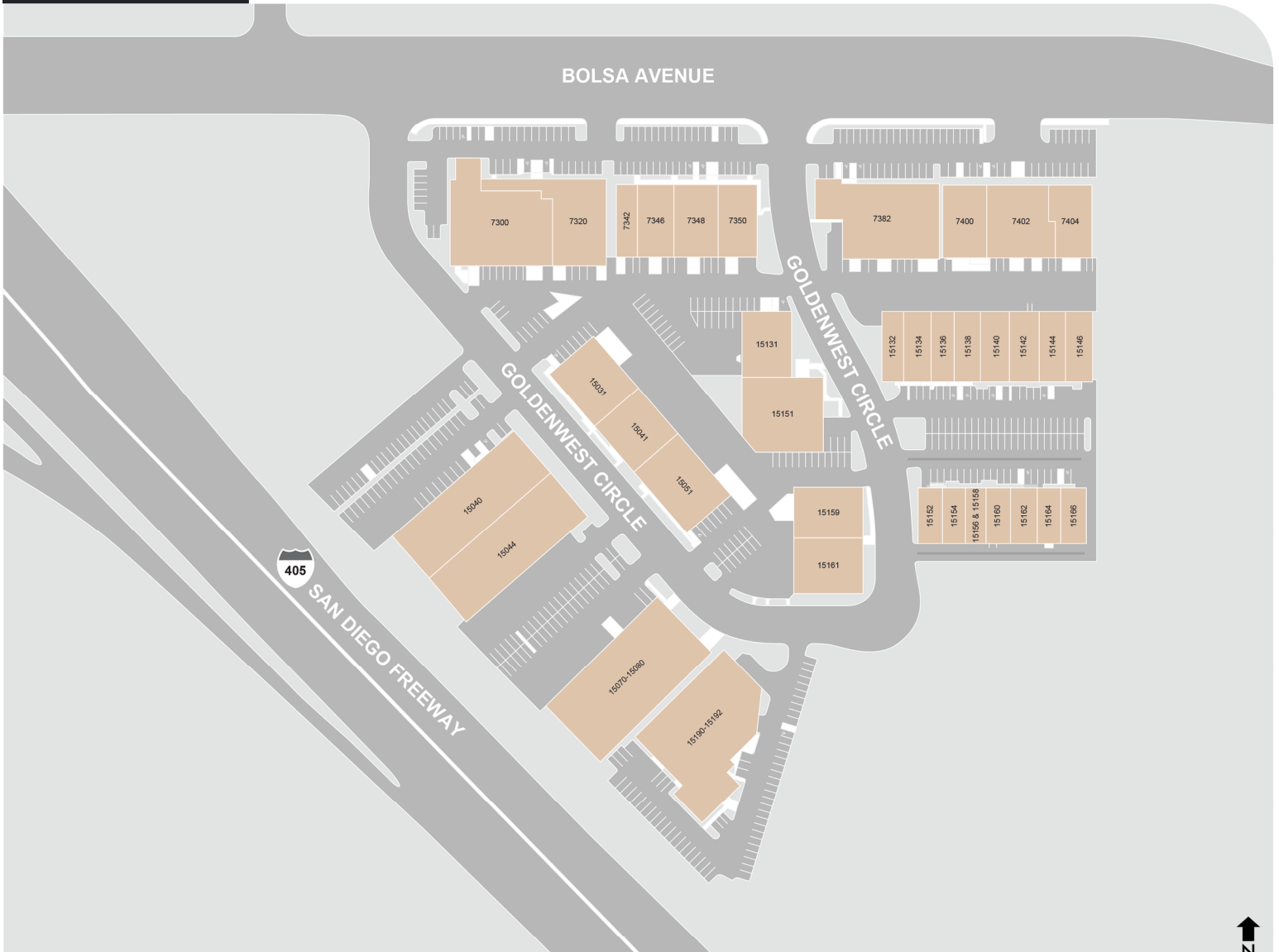


Clear Height
14-20 Feet



Parking Ratio
2:1,000

SITE PLAN



PROFILE



AVAILABILITY

15162 Goldenwest Circle

Size: 1,728 SF

Rate: \$1.75 G

Description: 1 private office, reception area,
1 restroom, large open bullpen,
warehouse with 1 GL door

7346 Bolsa Avenue

Size: 4,506 SF

Rate: \$2.00 MG

Description: Front reception, 1 large private
office, kitchenette, 2 private restrooms,
warehouse with 1 large GL door

PROPERTY PROFILE

Address 7300-7404 Bolsa Avenue &
15132-15192 Goldenwest Circle
Westminster, CA

Total SF ±231,250 SF

Land Size ±12.63 Acres

Zoning M-2 (Medium Industrial)

Year Built 1967-1969

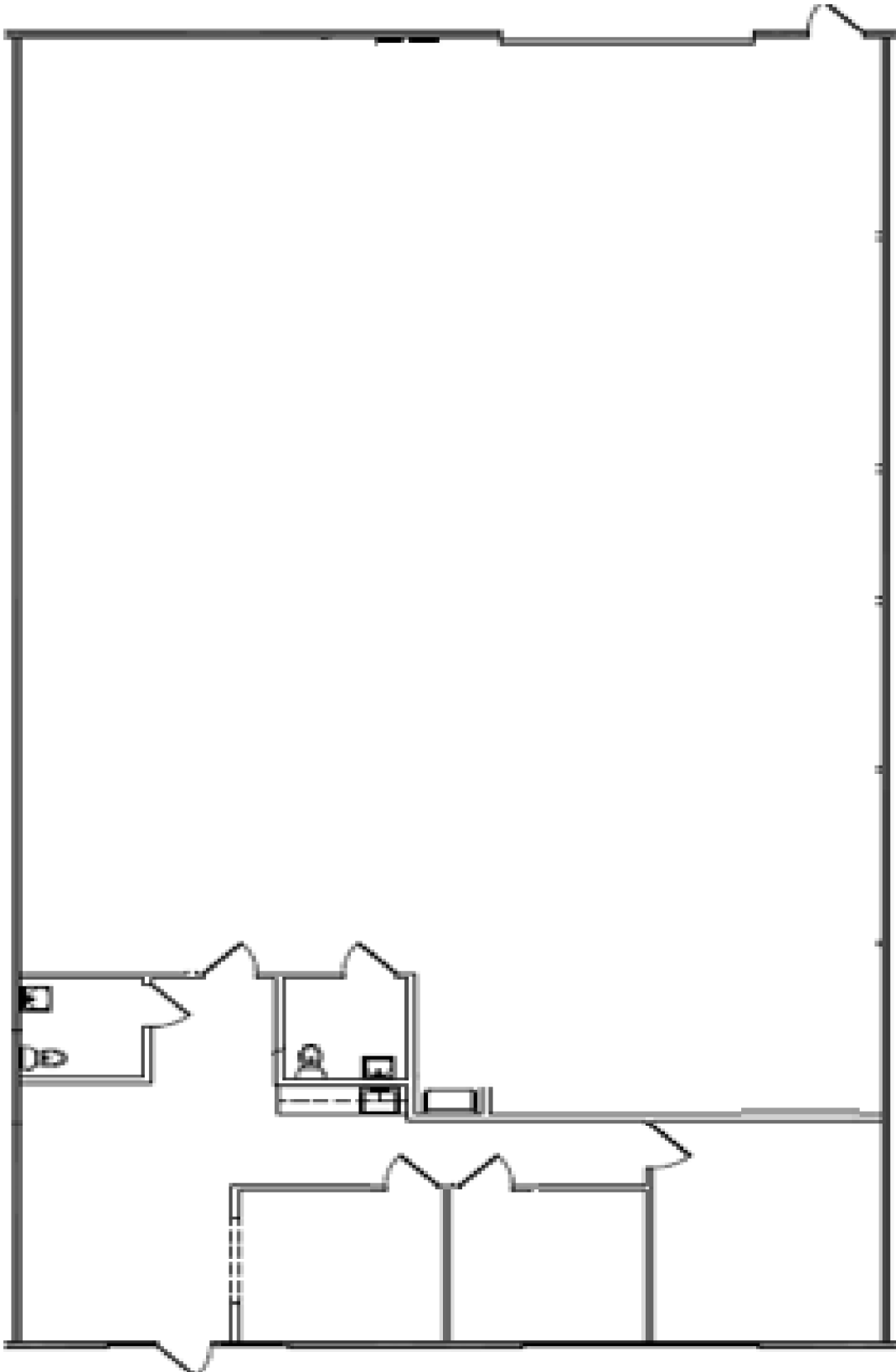
Clear Height 14-20 Feet

Parking Ratio 2:1,000

Power 100-400 Amps; 120/240 Volts

GL Doors 1-2 GL Doors per Unit

7346 Bolsa



PHOTOS

